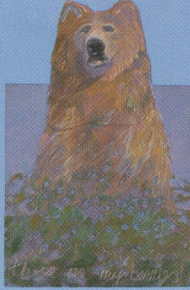
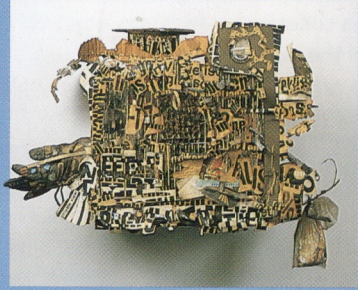
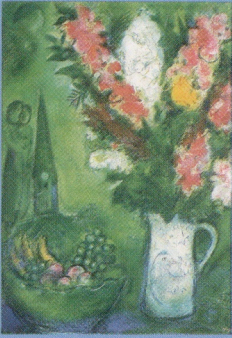


# NORDJYLLANDS KUNSTMUSEUM







**J. F. Willumsen: Two Breton Wives Parting After a Talk. 1890**

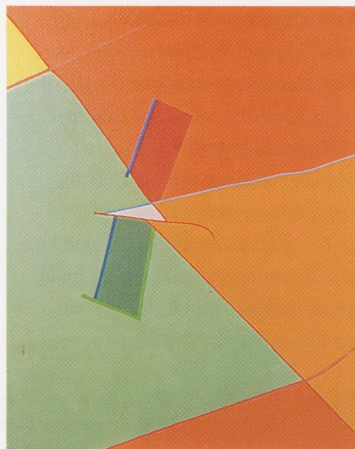
Nordjyllands Kunstmuseum has a permanent exhibition of Danish and foreign art from the end of the 19th century up until today.

The basis is formed by two private Danish collections, the oldest being Anna and Kresten Krestensen's collection, which was acquired in 1967. It shows the development from naturalism to abstract art. J. F. Willumsen is centrally placed, and modernism is represented by works by Edvard Weie, Harald Giersing and Vilhelm Lundstrøm. The main focus of Anna and Kresten Krestensen's collection is, however, the 1940s and 1950s. The COBRA group is illustrated by works by Ejler Bille, Asger Jorn, Egill Jacobsen, and others. The collection contains not only the works of Danish artists like Robert Jacobsen and Richard Mortensen, but also works of foreign artists like Karel Appel, Pierre Alechinsky, Auguste Herbin, Victor Vasarely, and Serge Poliakoff.

In 1986, Kirsten and Axel P. Nielsen's collection was given to Nordjyllands Kunstmuseum. The collection begins with the work of surrealist Wilhelm Freddie and places strong emphasis on experimental art from the beginning of the 60s until today.



**Asger Jorn: Small Things (1940)**



**Richard Mortensen: Thursday. 1976. From the series of Weekday Icons**

Works by artists like Addi Köpcke, Nam June Paik, and others from the »Fluxus« school, take up a large and interesting section.

The permanent collection is presented with special care taken to show the relationship between artists who have either worked together or have been associated with each other. The museum also acquires new works of art, where the main importance is placed on the purchase of art of today.





The exhibition The Erling Neby Collection of Constructivist Art. 1991

A varied range of special exhibitions are regularly held, and many are of international importance. The purposes are varied. They can illustrate a theme, a period, show experiments with new materials. Other special exhibitions can show an individual artist's development, illustrate significant artistic developments or provide a contrast to the museum's own collection. The Children's Museum features art exhibitions for children, often based on a single idea. The museum's normal

restrictions – don't touch – keep quiet – are replaced by an offer to see and feel in a freer way. The children's exhibitions are created at the museum, in close cooperation with the artists.

Geoffrey Hendricks' exhibition. 1984



Mogens Otto Nielsen's children's exhibition Would you like to try the Birds' Nests? 1992





# Information



## NORDJYLLANDS KUNSTMUSEUM

Kong Christians Allé 50

DK-9000 Aalborg

Telephone (+45) 98 13 80 88

### Opening hours

Daily 10-17 - closed Mondays

July and August open every day 10-17

### Admission charges

Adults DKR 20,- Children free

Reduced rates for students, senior citizens,  
and groups (more than 12)

We reserve the right to change these conditions

### Guided tours

By arrangement

### School's service

Contact the museum for details and guided tours  
for school classes

### Hiring

Rooms for special arrangements are available  
(music, theatre, lectures, congresses).

Contact the museum for further information



# The Building



Architectural details

The skylit galleries with the permanent collection. 1990

Nordjyllands Kunstmuseum was designed by Elissa and Alvar Aalto and Jean-Jacques Barué, and built between 1968 and 1972. It is a very flexible building, that, due to the mobile partition wall system, can change character, depending on the require-

ments of each individual exhibition. Special note should also be made of the unique use of natural light, which has helped to make the building world famous. The museum is designed to blend in with its natural surroundings, and like a ziggurat it rises to meet the adjoining hillside. It is situated on the edge of a large area of parks and woodland, and the surrounding vegetation stands in contrast to the precise contours of the building. The materials used were specially selected. The outer walls, and a large part of the floor area are made of carrara marble, and the light material structure helps to give prominence to the art works. The total area is approx. 6000 sq.m. On the ground floor is the central hall together with an adjoining sculpture hall. Surrounding these are series of long skylit galleries, seven smaller exhibition rooms, a chamber music room, the entrance hall, and the administration offices. On the lower ground floor are exhibition rooms, a café, cloakroom, lecture rooms, a study group room, a workshop and a library.

The central hall, Centre for Modern and Contemporary art. 1984





# Sculpture Park



Björn Nørgaard's Dream Palace. 1979/82

Björn Nørgaard's "Dream Palace" with its proud tower and flags flapping in the breeze holds a central position in the sculpture park. It is flanked by Mogens Møller's »Time Jars« and Gunnar Aagaard Andersen's »Column Labyrinth«. They all invite you to a journey in fantasy under the open sky. The destination changes as new works are added – the latest Lene Adler Petersen's four bronze jars.

In the summer, theatre performances, music arrangements and variety shows are staged in the amphitheatre.

A variety show in the amphitheatre



# Museumscaféén



The »Museumscaféén« is situated on the lower ground floor overlooking the sculpture park. A wide selection of light lunches, salads, cakes and drinks are available, and in the summer months, refreshments may be taken into the sculpture park.

Various musical arrangements are held in the café, including Sunday afternoon matinées. The café can serve food for groups of up to 100 people, and receptions for 150. The café can be reserved for private parties, companies, clubs and other organisations, after the museum's normal opening hours.

The café opens at 10.00 am and closes at 4.45 pm.

Harald Slott-Møller:  
Primavera.  
1901



